



Ultimate Private Villas and **Residences**





Situated on a pristine and tranquil beach lies Aleenta Phuket-Phang Nga, a luxury resort with stunning architecture and minimalist interiors, gently caressed by a soft Asian spirituality which permeates the resort. It is this unique philosophy where guests can re-connect with the world around them which has fast made Aleenta become a talking point among discerning travellers around the world.

The residences and villas offer the ultimate introduction to the Aleenta philosophy. Each villa and residence is assigned a personal butler where every desire from check-in to check-out is catered for ... perfect for those who appreciate the benefits of a private residence or villa paired with the services of a luxury resort.





ONE BEDROOM POOL RESIDENCE

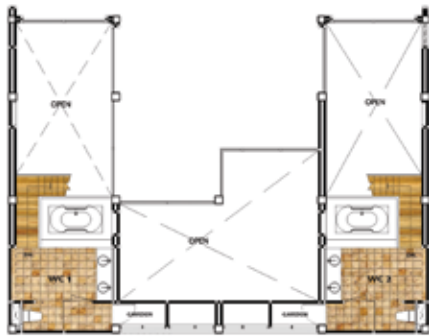
A vast residence, with extensive interior and exterior areas, these one bedroom villas offer exquisite sea views out onto the Andaman Sea, and feature a secluded sun deck - ideal for whiling away the days in complete tranquillity.

TWO BEDROOM POOL RESIDENCE

Whether relaxing in total comfort in the "Cloud 9" bed, or luxuriating in the oversize en-suite bathrooms, guests will enjoy unobstructed views of the crystal waters of the Andaman Sea. Intelligently designed, these residences are perfect for those who wish to relax inside and for those who wish to immerse themselves in the tropical splendour outside.



EARTH



SEA LOFT UPPER



SKY LOFT UPPER



SEA GROUND



SKY GROUND



BEACHFRONT VILLA

The ultimate in beachfront living, these villas offer three oversized bedrooms, each with en-suite bathroom and unrestricted panoramas of the sea.

Created to encapsulate Aleenta's "Outside Living-in" experience, guests will appreciate the seamless merging of interiors and exteriors of each villa. Inside, extensive facilities and amenities designed with the discerning traveller in mind offer another level in luxury and sophistication; outside, a vast wooden sun deck with private swimming pool is a secluded spot in which to appreciate the tropical majesty of this stunning location and villa.



WIND 1ST FLOOR



WIND 2ND FLOOR



AIR 1ST FLOOR



AIR 2ND FLOOR





ROOM FEATURES IN ALL VILLAS AND RESIDENCES

- 420 count Egyptian cotton long stem bed linen exclusively milled for Aleenta Villas and Residences
- Bath tub or Jacuzzi with separate shower, some with outdoor Daybed
- DVD player
- Electronic in-room safe
- Exclusively designed 100% natural toiletries
- Exclusive copyright reserved Aleenta mattresses with individually wrapped coil and all natural materials by "Cloud 9"
- Pre-programmed iPod music system with extensive music library
- Private terrace overlooking the ocean
- Satellite TV with international channels
- Wireless Internet connection
- Personal butler service

FACILITIES AND ACTIVITIES

- Complimentary mountain bikes, public library, iPods
- Spa IV within Aleenta Resort and Spa
- Excursions to the National Park
- Three golf courses within 20 minutes drive
- Diving trips to the Similan Islands, recognised as one of the best dive sites in SE Asia
- Sailing and private yacht charters

LOCATION AND ACCESS

Aleenta's villas are located on the west coast on pristine and private Natai beach in Phang Nga, next to the Andaman Sea, just 20 minutes north of Phuket International Airport.



3 SOI LADPRAW 95, LADPRAW ROAD,
WANGTHONGLANG, BANGKOK 10310 THAILAND
Tel: +66 2 514 8112 Fax: +66 2 539 4373
E-mail: reservations@aleenta.com

Managed by



Intuitive Luxury

www.aleenta.com

GDS Codes

Amadeus: LX HKTAL • Apollo/Galileo: LX 73877 • Sabre/Abacus: LX 27358
Worldspan: LX HKTAL • Travel Web: LX HUHKTAL

